

# JAKKS Pacific® Battery, Solar or Electrically-Operated Product 90 DAY LIMITED WARRANTY

Thanks for purchasing a great JAKKS Pacific® product! Please immediately register your product online at [www.jakks.com/warranty](http://www.jakks.com/warranty). Registration is not required for the effectiveness of this limited warranty.

## IMPORTANT NOTICE TO CONSUMER:

This 90 DAY LIMITED WARRANTY applies to the original product purchaser, provided the product: 1) was purchased from an authorized JAKKS™ distributor/dealer/retailer, and 2) is returned at your expense, postage pre-paid and insured, along with the original dated sales receipt to the address noted below. Please save a copy of your original sales receipt, as the original receipt will not be returned to you. If you return the product to us without the original dated sales receipt, this warranty coverage will not apply. If the product is determined by JAKKS to be defective and returned to JAKKS within the 90 day warranty period, we will (at our option) repair or replace it. Return shipment to you may take up to 6 weeks, depending upon your location. If your product is repaired or replaced, it will be warranted for the longer of the original warranty or for 30 days after warranty service.

**SCOPE OF LIMITED WARRANTY:** The product is warranted to be: a) tested and inspected before shipment, and b) free of defects in material and workmanship for 90 days from date of purchase. If a covered defect occurs within the warranty period, then at our sole option, we will repair or replace the product or provide you with another product of equal value.

## WHAT IS NOT COVERED BY LIMITED WARRANTY:

THIS WARRANTY IS VOID IF THE PRODUCT HAS BEEN MODIFIED OR REPAIRED BY USER OR OTHERS OR IF IT HAS BEEN DAMAGED AS A RESULT OF ACCIDENT, IMMERSION IN WATER, NEGLIGENCE, ABUSE, MISUSE, BATTERY LEAKAGE, IMPROPER BATTERY INSTALLATION, UNAUTHORIZED SERVICE, LOSS OF PARTS, WEATHER, ACTS OF GOD, ANY ACTION OR OMISSION WHICH CONSTITUTES A DEVIATION FROM THE OPERATING INSTRUCTIONS, OR ANY OTHER CAUSES NOT ARISING OUT OF DEFECTS IN WORKMANSHIP OR MATERIALS.

**EXCLUSIONS FROM LIMITED WARRANTY:** THIS WARRANTY IS EXCLUSIVE OF AND IN LIEU OF ALL OTHER EXPRESS OR IMPLIED WARRANTIES RELATED TO THIS PRODUCT, INCLUDING ANY IMPLIED WARRANTIES OF MERCHANTABILITY OR FITNESS FOR A PARTICULAR PURPOSE. SPECIAL, INCIDENTAL AND CONSEQUENTIAL DAMAGES ARISING FROM POSSESSION, USE, OR MALFUNCTION OF THIS PRODUCT ARE EXCLUDED BOTH FOR PROPERTY DAMAGE AND PERSONAL INJURY TO THE EXTENT LEGALLY PERMITTED.

**ADDITIONAL LEGAL RIGHTS:** This warranty provides specific legal rights. You may have other or different rights in your state or country.

**QUESTIONS OR COMMENTS:** If you experience product difficulties or have questions or comments, you may contact our Consumer Relations department as follows: Phone: 877-875-2557 (toll-free, North America only) or 909-594-7771 (Monday-Friday, 7:30AM-4:30PM Pacific/GMT -8). Mail: JAKKS Consumer Relations, 21749 Baker Parkway, Walnut, California USA 91789. Email: [consumers@jakks.com](mailto:consumers@jakks.com)

**WHEN WRITING TO US:** Please include: 1) product name; 2) item number; 3) purchase date; 4) description of the problem being experienced; and 5) your name, address and phone number. Additionally, if eligible under the warranty and so advised by JAKKS Consumer Relations, also include the defective product and the ORIGINAL dated sales receipt evidencing product purchase. Please retain a copy of your receipt.

080309

This device complies with part 15 of the FCC rules. Operation is subject to the following two conditions: (1) This device may not cause harmful interference, and (2) this device must accept any interference received, including interference that may cause undesired operation CAN ICES-3 (B)/NMB-3(B)  
Caution: changes or modifications not expressly approved by the party responsible for compliance could void the user's authority to operate the equipment.  
NOTE: This equipment has been tested and found to comply with the limits for a Class B digital device, pursuant to Part 15 of the FCC Rules. These limits are designed to provide reasonable protection against harmful interference in a residential installation. This equipment generates, uses and can radiate radio frequency energy and, if not installed and used in accordance with the instructions, may cause harmful interference to radio communications. However, there is no guarantee that interference will not occur in a particular installation. If this equipment does cause harmful interference to radio or television reception, which can be determined by turning the equipment off and on, the user is encouraged to try to correct the interference by one or more of the following measures:  
- Reorient or relocate the receiving antenna.  
- Increase the separation between the equipment and receiver  
- Connect the equipment into an outlet on a circuit different from that to which the receiver is connected.  
- Consult the dealer or experienced radio/TV technician for help.



## Troubleshooting

If for some reason the toy stops working, please follow these steps:

1. Remove batteries from the toy.
2. Let the toy sit for several minutes, then replace the batteries with current or fresh batteries.
3. Note: Toy performance may be affected when using non alkaline / rechargeable batteries.



TM & © 2016 MANUFACTURED BY JAKKS PACIFIC, INC.,  
2951 28TH STREET, SANTA MONICA, CA 90405 U.S.A.

MADE IN CHINA.

All other symbols, marks, logos, and designs (collectively "Trademarks") are Trademarks of and proprietary to their respective owners and used under license.

Contents may vary in style, color, shape and decoration from images shown on package or in advertising. Questions or comments? [www.jakks.com](http://www.jakks.com), [consumers@jakks.com](mailto:consumers@jakks.com), or 1-877-875-2557 in North America.

**ATTENTION!**  
Remove and discard packaging ties and fasteners before giving toy to child.

Retain packaging for future reference.

©Disney  
Visit [www.disney.com/Frozen](http://www.disney.com/Frozen)  
"LET IT GO"  
Performed by Elsa  
Music and Lyrics by Kristen Anderson Lopez and Robert Lopez  
© 2013 Wonderland Music Company, Inc. (BMI)  
(p) 2013 Walt Disney Records  
All Rights Reserved

P.4

Disney  
**FROZEN**

# Sing-A-Long Elsa Instruction Manual



## Contents

1 Doll, 1 Dress, 1 Pair of Shoes,  
1 Microphone and 1 Instruction Sheet with Song Lyrics

**WARNING:** CHOKING HAZARD - Small parts.  
Not for children under 3 years.

31078-A100-61-ES

Ages  
**3+**

P.1

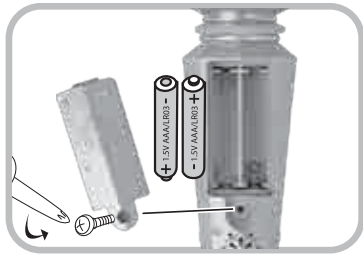
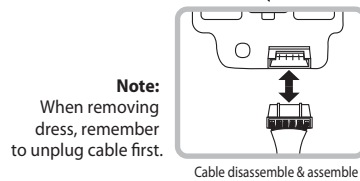
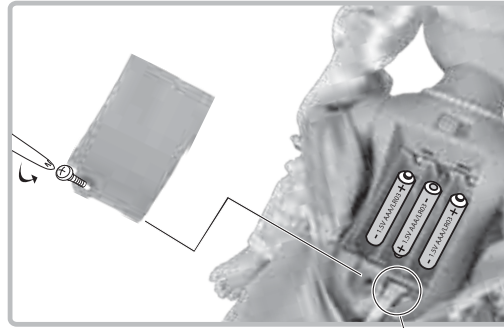
## GETTING STARTED

### DOLL BATTERY INSTALLATION INSTRUCTIONS

Batteries included are for "Try Me" purposes only. If performance diminishes after purchase, replace with fresh batteries. Requires 3 x "AAA" (LR03 / R03) 1.5V batteries (included).

### ADULT INSTALLATION REQUIRED

1. Locate battery compartment on back as shown in illustration.
  2. Using a Phillips Head Screwdriver (not included), remove the screw and battery cover.
  3. Install 3 new "AAA" (LR03 / R03) 1.5V batteries.
  4. Replace the battery cover and tighten the screw.
- Close the fabric on the back of the dress.



### MICROPHONE BATTERY INSTALLATION

Requires 2 x "AAA" (LR03 / R03) 1.5V batteries (not included).

1. Locate battery compartment on back as shown in illustration.
2. Using a Phillips Head Screwdriver (not included), remove the screw and battery cover.
3. Install 2 new "AAA" (LR03 / R03) 1.5V batteries.
4. Replace the battery cover and tighten the screw.

### BATTERY SAFETY INFORMATION

**⚠ WARNING!** Battery acid leakage can cause personal injury and cause damage to the product and surrounding property. If battery leakage occurs, thoroughly wash any affected skin, making sure to keep battery acid away from eyes, ears, nose, and mouth. Immediately wash any clothing or other surface that comes in contact with leaked battery acid. Leaking batteries may make "popping" sounds. Dispose according to Local, State or Federal Battery Laws.

NEVER mix old and new batteries or different brands of batteries.

NEVER mix alkaline, standard (carbon-zinc), rechargeable (nickel-cadmium) batteries with this product.

NEVER dispose of batteries in fire, as they may leak and explode.

NEVER use rechargeable batteries.

NEVER attempt to charge non-rechargeable batteries.

ALWAYS remove exhausted batteries from toy.

ALWAYS have an adult install batteries consistent with installation instructions.

ONLY use batteries specified by manufacturer.

Batteries are to be inserted with the correct Polarity.

The supply terminals are not to be short-circuited.

## HOW TO PLAY

### Normal Play Mode

Move the switch to the Play mode position.



- 0 - Play mode
- 1 - Try me mode
- 2 - Language selection mode

## PLAY FEATURES

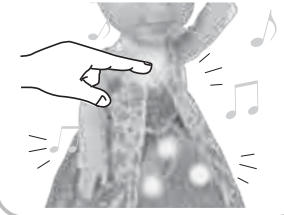
### Duet Mode

1. Press the gem on Elsa's necklace or put the microphone near Elsa's mouth to trigger the duet mode. Elsa will start to sing and her dress will light up.
2. Whenever the microphone is near Elsa's mouth, Elsa will sing. When you take the microphone away from Elsa, only the background music will play.
3. If you want to sing, press the button on the microphone and then sing through the microphone.



### Singing Mode

Raise Elsa's left arm to hear the hit song "Let it Go" while watching her dress and necklace light up to the beat of the music. After the song is finish, lower the left arm first before next triggering .



### Correct Way to Position Microphone



### Precaution

To avoid feedback, please do not cover the microphone.

### Language Selection Mode

Switch to "Language Selection Mode". Press the gem on Elsa's snowflake necklace to hear "Let it Go" in Spanish and English. Switch back to "Play Mode" when your preferred language is heard.

